



AUSTRALIAN BUREAU OF STATISTICS

CANBERRA

**PERSONS NOT IN THE
LABOUR FORCE
AUSTRALIA**

SEPTEMBER 1986

CATALOGUE NO. 6220.0

EMBARGOED UNTIL 11.30 A.M. 11 FEBRUARY 1987

PERSONS NOT IN THE LABOUR FORCE, AUSTRALIA

SEPTEMBER 1986

IAN CASTLES

Australian Statistician

© Commonwealth of Australia 1987

PHONE INQUIRIES • *about these statistics*—contact Ms Sandra Martyn on Canberra (062) 52 6503 or any ABS State office.
 • *about other statistics and ABS services*—contact **Information Services** on Canberra (062) 52 6007, 52 6627, 52 5402 or any ABS State office.

MAIL INQUIRIES • *write to Information Services*, ABS, P.O. Box 10, Belconnen, A.C.T. 2616 or any ABS State office.

ELECTRONIC SERVICES • on VIATEL — key *656#. • on AUSSTATS — phone (062) 52 6017.
 • on TELESTATS — phone (062) 52 5404.

CONTENTS

<i>Table</i>	<i>Page</i>
.. Explanatory Notes	1
.. Summary of Findings	4
 Civilian population aged 15 and over, September 1983 to September 1986—	
1 Labour force status and sex	8
 Persons not in the labour force with marginal attachment to the labour force, September 1983 to September 1986—	
2 Sex and main reason for not actively looking for work	9
3 Summary of characteristics	10
 Discouraged jobseekers, September 1983 to September 1986—	
4 Age	10
 Persons not in the labour force—	
5 Occupation in last job, main activity and sex	11
 Persons who had had a job—	
6 Reason for ceasing last job and time since last job	12
7 Reason for ceasing last job, status of worker in last job and full-time or part-time status in last job	12
 Persons who wanted to work—	
8 Intention to look for work in the next twelve months, age and sex	13
9 Type of work preferred, age and sex	13
 Persons with marginal attachment to the labour force—	
10 Main reason for not actively looking for work, intention to look for work in the next twelve months and type of work preferred	14
11 Time since last job and whether looked for work in the last twelve months	14
12 Whether looked for work in the last twelve months, family status and sex	15
13 Type of work preferred, family status and sex	15
14 Summary of characteristics	16
 Persons who wanted to work but were not actively looking for work and were available to start work within four weeks—	
15 Main reason for not actively looking for work, age and sex	17
16 Whether looked for work in the last twelve months, intention to look for work in the next twelve months and sex	18
17 Time since last job, intention to look for work in the next twelve months and sex	18
 Discouraged jobseekers—	
18 Whether looked for work in the last twelve months, time since last job and intention to look for work in the next twelve months	19
 Persons who wanted to work but were not actively looking for work and were not available to start work within four weeks—	
19 Reason not available to start work within four weeks, intention to look for work in the next twelve months and type of work preferred	19
20 Reason not available to start work within four weeks and age	19
.. Additional Tables	20
.. Technical Note	21

EXPLANATORY NOTES

Introduction

The monthly Population Survey (which is described in *The Labour Force, Australia* (6203.0)) comprises the monthly labour force survey and supplementary topics. This publication contains some results of a supplementary survey run in association with the September 1986 labour force survey conducted throughout Australia.

2. Of the respondents to the labour force survey, those who fell within the scope of the supplementary survey were asked additional questions. This subset of respondents were asked about their labour force aspirations and, if appropriate, their reasons for not actively looking for work and their availability for work.

Scope

3. The scope of this supplementary survey was the same as that used for the labour force survey (described in full in *The Labour Force, Australia* (6203.0)) except that it was restricted to persons not in the labour force.

Definitions

4. Persons not in the labour force are by definition those persons who do not meet the criteria that would enable them to be classified as being in the labour force. To be classified as being in the labour force, a person must be aged 15 or over and be either *employed* or *unemployed*.

5. *Persons not in the labour force*, therefore, include all persons aged 15 and over who are not employed, who want to work but do not meet the criteria to be classified as unemployed; who do not want to work; or who, through incapacity or infirmity cannot work.

6. The criteria determining those in the labour force are based on actual activity (i.e. working or looking for work) during the survey week. The criteria associated with marginal attachment to the labour force, in particular the concepts of wanting to work, reasons for not actively looking for work and availability to start work, are more subjective and are not based on respondents' actual activity. Hence, the measurement of these criteria is affected by the respondents' own interpretation of the concepts used. An individual respondent's interpretation is affected by such factors as the respondent's work aspirations, as well as family, economic and other commitments.

7. *Persons with marginal attachment to the labour force* are those who were not in the labour force in the survey week, wanted to work and:

- (a) were actively looking for work but do not meet the criteria to be classified as unemployed; or
- (b) were not actively looking for work but were available to start work within four weeks.

8. *Persons not in the labour force who wanted to work* are those who:

- (a) in the four weeks up to the end of the survey week had taken *active steps* to find work but do not meet the criteria to be classified as unemployed; or
- (b) although claiming to have looked for work in the four weeks up to the end of the survey week, had not taken *active steps* to find work; or
- (c) in the four weeks up to the end of the survey week had not looked for work but in the survey answered 'yes' or 'maybe' to the question '*Even though you have not been looking for work would you like a full-time or part-time job?*'.

9. *Discouraged jobseekers* are those persons with marginal attachment to the labour force who wanted to work and were available to start work within four weeks but whose main reason for not taking active steps to find work was that they believed they would not be able to find a job for any of the following reasons: considered to be too young or too old by employers; difficulties with language or ethnic background; lacked the necessary schooling, training, skills or experience; no jobs in their locality or line of work; or no jobs at all.

10. *Active steps taken to find work* comprise writing, telephoning or applying in person to an employer for work; answering a newspaper advertisement; checking factory or Commonwealth Employment Service noticeboards; being registered with the Commonwealth Employment Service; checking or registering with any other employment agency; advertising or tendering for work; and contacting friends or relatives.

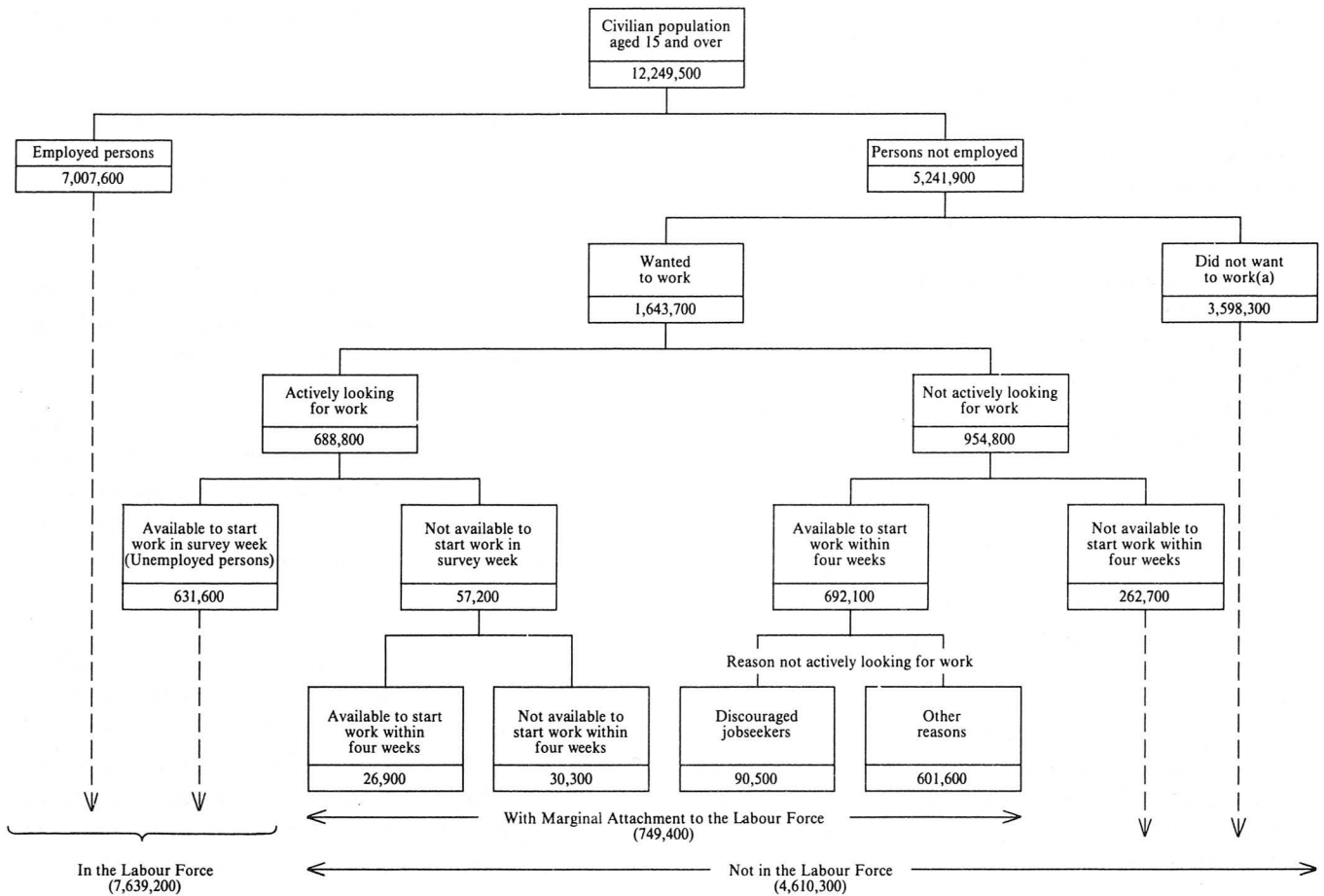
11. A *job* is any paid employment, full-time or part-time, lasting two weeks or more.

12. Unless otherwise stated, all characteristics referenced in this publication are as at the survey week.

13. Further definitions of labour force and demographic classifications appearing in this publication are given in *The Labour Force, Australia* (6203.0).

14. The various groups of persons either in the labour force or not in the labour force, including those marginally attached to the labour force, are shown schematically in the diagram on the following page.

RELATIONSHIP OF PERSONS WITH MARGINAL ATTACHMENT TO THE LABOUR FORCE TO PERSONS IN OR NOT IN THE LABOUR FORCE, SEPTEMBER 1986



(a) Includes institutionalised, boarding school pupils and persons permanently unable to work.

Results of the survey

15. Estimates of persons not in the labour force are also published in *The Labour Force, Australia* (6203.0). However, more detailed information is contained in this publication.

16. Due to differences in the method of estimation used in this supplementary survey and that used in the Labour Force Survey, there are some small variations between estimates in this publication and those in the September issue of *The Labour Force, Australia* (6203.0).

17. The estimates in this publication refer to information collected in the survey month and, due to seasonal factors, may not be representative of other months of the year.

18. Additional tables available but not included in this publication are listed on page 20. A preliminary publication (6219.0) containing a summary of the results of the survey was issued on 4 December 1986.

19. Results of similar surveys, which have been conducted each March and September since March 1979, and also in May 1977 and November 1975, have been given in previous issues of this publication.

20. It is proposed that this survey will next be conducted in March 1987.

Discontinuities in the series

21. New or amended concepts were introduced in the September 1983 survey, causing a break in series. These modifications included the addition of certain groups of persons excluded from previous *Persons Not in the Labour Force* surveys, several alterations to the order and wording of questions and several alterations to definitions used in the survey.

22. Estimates for September 1986 contained in this publication are based on a revised labour force questionnaire introduced in April 1986. The definition of employment was expanded resulting in a slight decrease in the estimate of persons not in the labour force. Further information is contained in *The Labour Force, Australia* (6203.0) and in an information paper *Questionnaires Used in the Labour Force Survey* (6232.0). Although estimates for previous years have not been revised in this publication, the September issue of *The Labour Force, Australia* (6203.0) contains revised estimates for persons not in the labour force back to August 1985.

23. Classification of occupation according to the Australian Standard Classification of Occupations (ASCO) 1986 was introduced in the September 1986 survey, replacing the Classification and Classified List of Occupations (CCLO), used in previous surveys. The main difference between these classifications is that ASCO occupations are classified on the basis of the level and

specialisation of skill required for the satisfactory performance of primary tasks. For a more detailed explanation of ASCO see the appendix to *The Labour Force, Australia, August 1986* (6203.0).

24. To provide a link between the two classifications, a matrix has been produced and is shown in Table 41 of *The Labour Force, Australia, August 1986* (6203.0). This matrix shows the relationship between ASCO and CCLLO at the broadest classification level (the Major Group). The estimates in the matrix are based on a sub-sample of respondents to the May 1986 Labour Force Survey.

Reliability of the estimates

25. Estimates in this publication are subject to two sources of error:

- (a) *sampling error*: since the estimates are based on information obtained from occupants of a sample of dwellings, they may differ from the figures that would have been produced if all dwellings had been included in the survey. More information on this topic is given in the Technical Note.
- (b) *non-sampling error*: inaccuracies may occur because of imperfections in reporting by interviewers and respondents and errors made in the coding and processing of data. These inaccuracies may occur in any enumeration, whether it be a full count or only a sample. Every effort is made to reduce the non-sampling error to a minimum by careful design of questionnaires, intensive training and supervision of interviewers and efficient operating procedures.

Related publications

26. Other ABS publications which may be of interest include:

The Labour Force, Australia (6203.0)—issued monthly (\$1.80 incl. postage)

Labour Force Experience, Australia, during the year ending February 1986, Australia (6206.0)—issued annually

Underemployed Workers, Australia, May 1985 (6265.0)—issued three-yearly

Job Search Experience of Unemployed Persons, Australia, June 1986 (6222.0)—issued annually

Employment, Underemployment and Unemployment 1966-1983, Australia (6246.0)—issued irregularly (\$1.70, \$2.40 incl. postage)

27. Current publications produced by the ABS are listed in the *Catalogue of Publications, Australia* (1101.0). The ABS also issues, on Tuesdays and Fridays, a *Publications Advice* (1105.0) which lists publications to be released in the next few days. The Catalogue and Publications Advice are available from any ABS office.

Symbols and other usages

- * subject to sampling variability too high for most practical uses. See paragraph 25 above.
- .. not applicable.
- n.e.c. not elsewhere classified.
- n.a. not available.

28. Because figures have been rounded, discrepancies may occur between sums of the component items and totals.

Electronic services

29. VIATEL. Key *656# for selected current economic, social and demographic statistics.

AUSSTATS. Thousands of up-to-date time series are available on this ABS on-line service through CSIRONET.

For further information phone the AUSSTATS Help Desk on (062) 52 6017.

TELESTATS. This service provides foreign trade statistics tailored to users' requirements.

Further information is available on (062) 52 5404.

SUMMARY OF FINDINGS

In September 1986 there were an estimated 4,610,300 persons aged 15 and over who were not in the labour force. These people constituted 37.6 per cent of the civilian population in the same age group, a proportion that had remained fairly steady at around 39.0 per cent from September 1983 to September 1985 but has decreased slightly in the two surveys since.

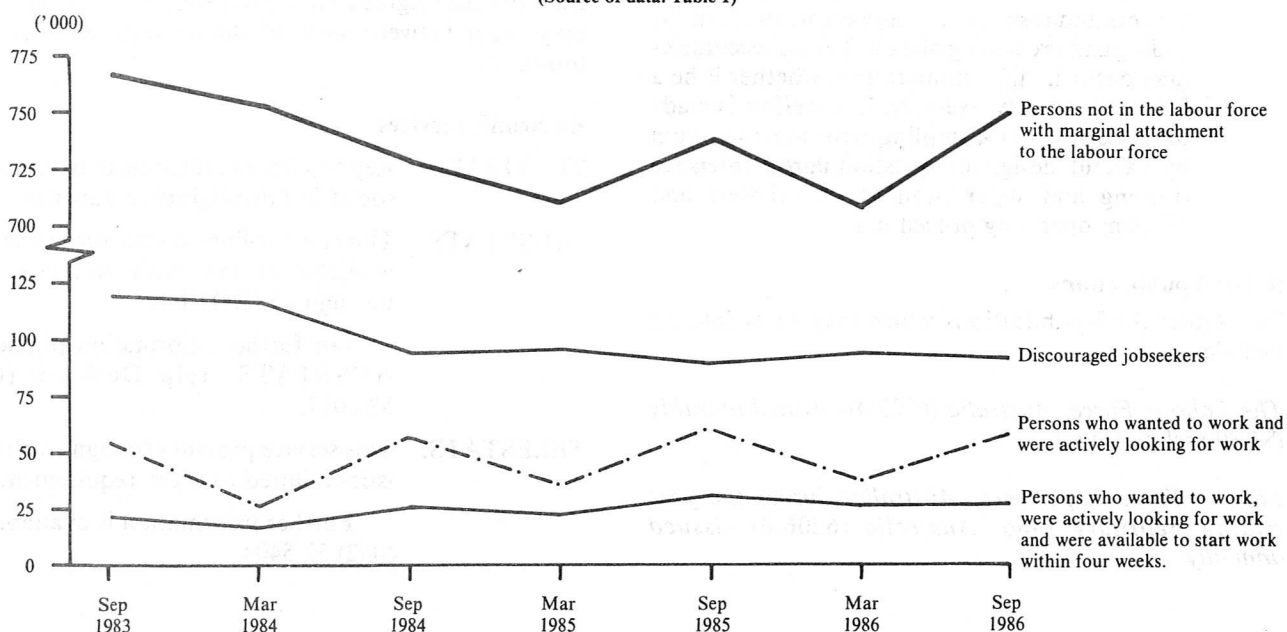
The number of persons who were discouraged jobseekers in September 1986 (90,500 or 12.1 per cent of those who were marginally attached to the labour force) has decreased since September 1983 (118,200). The majority of discouraged jobseekers had had a job, with 12,900 (14.3 per cent) having had one within the last twelve months. Most discouraged jobseekers had not looked for work within the last twelve months with only 29.9 per cent having done so. Only 9,600 (10.6 per cent) had looked for work within the last five weeks. The majority (70.7 per cent) of discouraged jobseekers preferred to work part-time.

60.8 per cent (55,000) of discouraged jobseekers intended to look or might look for work in the next twelve months whilst 33.6 per cent (30,400) did not intend to look. The most commonly reported reasons for not actively looking for work by discouraged jobseekers were 'no jobs in locality or line of work' (36.8 per cent) and 'considered too young or too old by employers' (34.6 per cent). The number who reported the reason 'no jobs at all' has decreased considerably from 39,700 in September 1983 to only 11,700 in September 1986.

Diagram 1 illustrates a seasonal pattern in the number of persons with marginal attachment to the labour force. Most of this seasonal change between September 1983 and September 1986 has occurred in the group of persons who wanted to work and were actively looking for work but were not available to start work within four weeks.

DIAGRAM 1. PERSONS NOT IN THE LABOUR FORCE WITH MARGINAL ATTACHMENT TO THE LABOUR FORCE, SEPTEMBER 1983 TO SEPTEMBER 1986

(Source of data: Table 1)

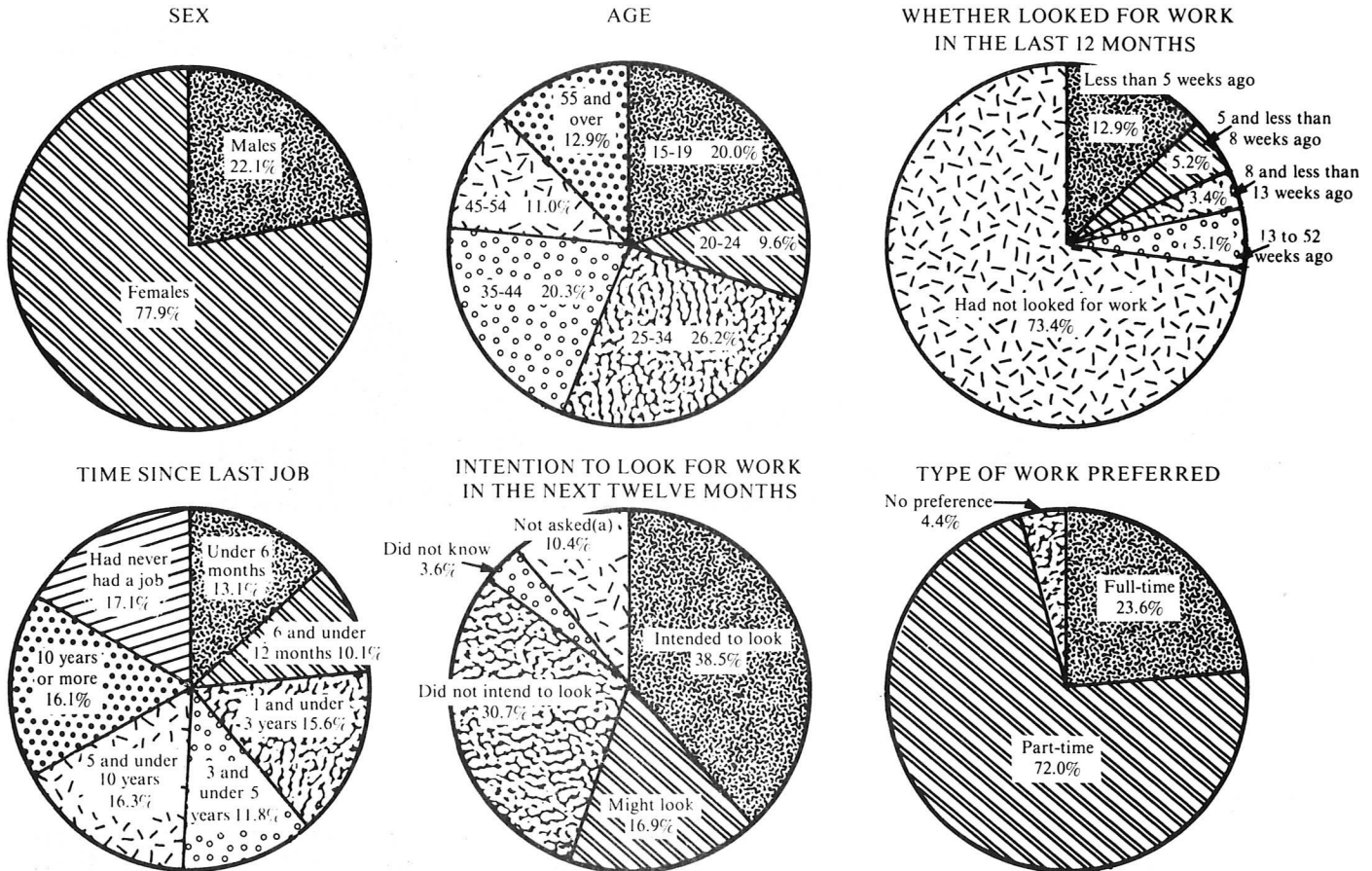


Persons not in the labour force with marginal attachment to the labour force

In September 1986 there were 749,400 persons not in the labour force who were considered to be marginally attached to the labour force. These people constituted 16.3 per cent of total persons not in the labour force, a proportion that has remained steady in the September surveys since 1983. The majority of persons who were marginally attached to the labour force were females (584,000) with males comprising only 22.1 per cent. 26.2 per cent of those persons with marginal attachment were in the 25 to 34 age group with approximately 20 per cent in both the 15 to 19 and 35 to 44 age groups. Of those persons with marginal attachment who were aged 55 and over, 36.5 per cent were discouraged jobseekers.

73.4 per cent (549,800) of persons with marginal attachment to the labour force had not looked for work in the last twelve months. Within the last five weeks only 12.9 per cent of persons with marginal attachment had looked for work. An estimated 38.5 per cent intended to look for work in the next twelve months whilst 16.9 per cent reported that they might look. Among those who did not intend to look for work in the next twelve months (30.7 per cent) the main reason for not actively looking for work was that children were too young or they preferred to look after children.

**DIAGRAM 2. PERSONS NOT IN THE LABOUR FORCE WITH MARGINAL ATTACHMENT TO THE LABOUR FORCE:
SUMMARY OF CHARACTERISTICS, SEPTEMBER 1986**
(Source of data : Tables 10, 14)



(a) Comprises persons who had a job to go to, persons who took active steps to find work and persons who had a job but, up to the end of the survey week, had been away from work without pay for four weeks or longer and had not been actively looking for work.

13.1 per cent of persons with marginal attachment to the labour force had had their last job within the last six months and 10.1 per cent between six and under twelve months ago. Approximately two-thirds of these people had not looked for work since they ceased their last job. 16.1 per cent had had their last job ten or more years ago whilst 17.1 per cent (128,200) had never had a job.

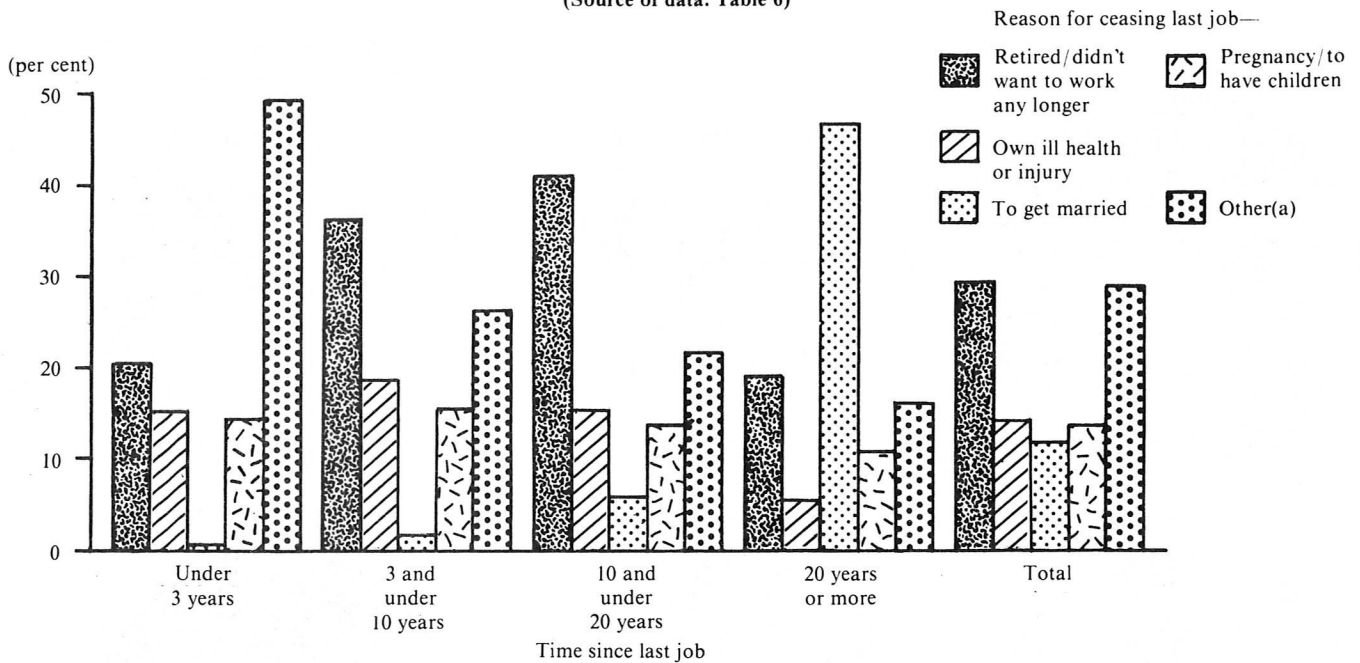
Most persons with marginal attachment to the labour force (72.0 per cent) reported that they preferred to work part-time, with the highest proportion of them not actively looking for work due to family reasons. Conversely, of those who reported that they preferred to work full-time the highest proportion were not actively looking for work due to personal reasons, the most common reason being attending an educational institution.

Persons not in the labour force who had had a job

Of those persons not in the labour force an estimated 3,694,800 (80.1 per cent) had had a job. Approximately 70 per cent of these people were females. Common reasons for ceasing their last job were to retire or because they did not want to work any longer (29.7 per cent), own ill health or injury (14.2 per cent), pregnancy (13.8 per cent) and to get married (12.8 per cent). Of those who had retired or did not want to work any longer 39.9 per cent and 28.3 per cent had had their last job between three and under ten years ago and between ten and under twenty years ago respectively. Only 17.7 per cent had had their last job under three years ago. The main reason for ceasing their last job, given by persons whose last job was twenty years or more ago, was to get married (47.5 per cent). This proportion decreased dramatically for people who had left their last job less than 20 years ago, with only 6.3 per cent reporting the same reason in the ten and under twenty years group.

Of the 2,875,100 persons whose last job was less than twenty years ago, most were employed in wage and salary earner jobs. 6.2 per cent were self employed and 3.3 per cent were employers. The majority of persons were employed in full-time work with only 26.7 per cent employed in part-time work.

DIAGRAM 3. PERSONS NOT IN THE LABOUR FORCE WHO HAD HAD A JOB: REASON FOR CEASING LAST JOB AND TIME SINCE LAST JOB, SEPTEMBER, 1986
(Source of data: Table 6)



(a) Includes reasons not shown separately.

Persons not in the labour force who wanted to work

There were 1,012,000 persons in September 1986 who were not in the labour force and wanted to work. 27.5 per cent of these people were in the 25 to 34 age group with 20.9 per cent and 19.5 per cent in the 15 to 19 and 35 to 44 age groups respectively. 700,400 (69.2 per cent) persons preferred to work part-time, however, only 36.5 per cent of persons intended to look for work in the next twelve months.

Intention to look for work in the next twelve months was seen to decrease as a function of increasing age, with 53.5 per cent of 15 to 19 year olds who wanted to work intending to look for work but only 16.2 per cent of people aged 60 and over reporting such intention.

The proportion of people who preferred a full-time job also decreased as age increased. Furthermore, while most males between the ages of 15 and 54 (59.7 per cent) would prefer a full-time job, most females in that age range (76.1 per cent) would prefer to work part-time.

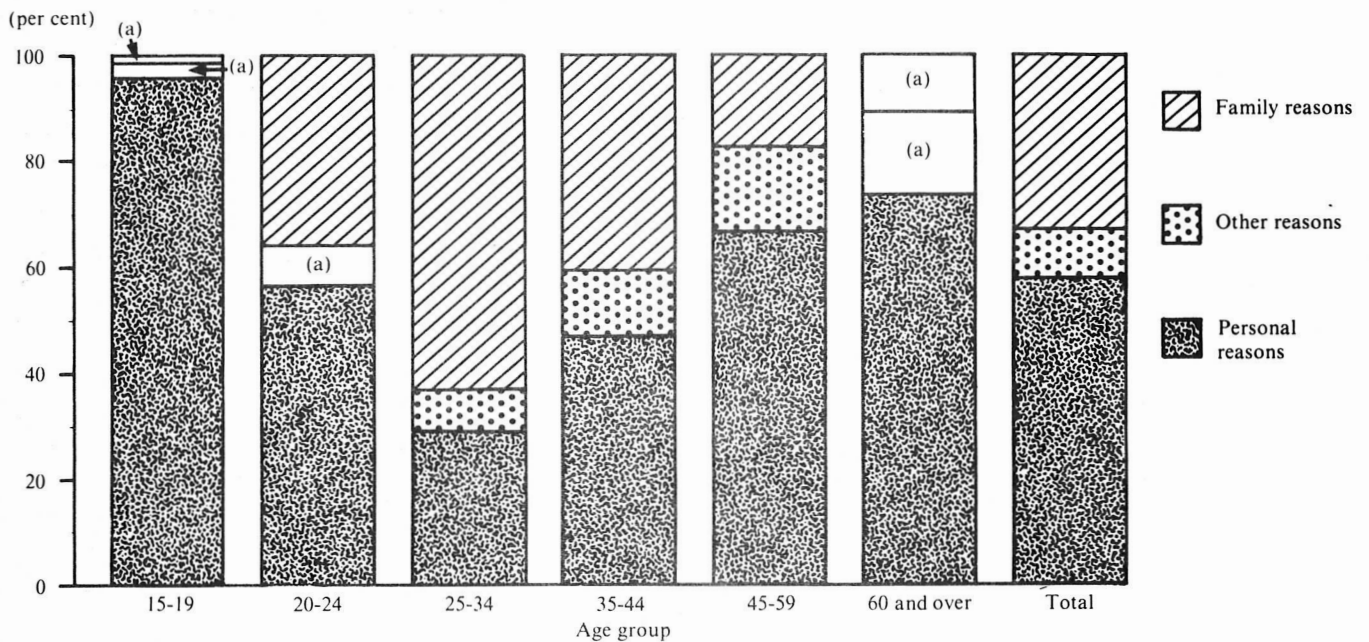
Persons who wanted to work but were not actively looking for work and were not available to start work within four weeks

In September 1986 5.7 per cent (262,700) of persons not in the labour force wanted to work but were not actively looking for work and were not available to start work within four weeks. 74.0 per cent of these were females. The majority of persons reported personal reasons as to why they were not available to start work within four weeks, the main reasons being own ill health (50.3 per cent) and studying at school (34.6 per cent). 88,000 (33.5 per cent) reported family reasons as to why they were not available to start work within four weeks, with most of these persons considering that the children were too young or they preferred to look after their children.

Reasons reported for not being available to start work within four weeks varied with age. In the 15 to 19 and 60 and over age groups personal reasons was predominately reported. Between these two age groups the number of persons who reported family reasons increased in line with their increased family responsibilities. The 25 to 34 age group had the highest proportion who reported family reasons.

DIAGRAM 4. PERSONS NOT IN THE LABOUR FORCE WHO WANTED TO WORK BUT WERE NOT ACTIVELY LOOKING FOR WORK AND WERE NOT AVAILABLE TO START WORK WITHIN FOUR WEEKS: REASON NOT AVAILABLE TO START WORK WITHIN FOUR WEEKS AND AGE, SEPTEMBER 1986

(Source of data: Table 20)



(a) Estimate subject to sampling variability too high for most practical uses.

TABLE 1. CIVILIAN POPULATION AGED 15 AND OVER : LABOUR FORCE STATUS,
SEPTEMBER 1983 TO SEPTEMBER 1986
(' 000)

	Sept. 1983	March 1984	Sept. 1984	March 1985	Sept. 1985	March 1986	Sept. 1986
MALES							
Civilian population aged 15 and over	5,725.7	5,768.4	5,812.3	5,856.6	5,906.0	5,968.2	6,031.5
Employed	3,979.6	4,052.3	4,059.1	4,080.8	4,166.4	4,213.0	4,237.2
Unemployed	435.3	404.7	376.8	389.7	341.6	352.2	362.5
Persons not in the labour force	1,310.7	1,311.3	1,376.5	1,386.2	1,398.0	1,403.0	1,431.8
With marginal attachment to the labour force	162.8	154.2	163.0	153.3	166.8	159.9	165.4
Wanted to work and were actively looking for work	28.2	12.6	29.2	14.8	24.9	14.0	26.5
Were available to start work within four weeks	7.4	9.3	10.8	10.8	9.2	10.0	9.4
Were not available to start work within four weeks	20.8	3.3	18.4	4.0	15.7	4.0	17.1
Wanted to work but were not actively looking for work and were available to start work within four weeks	134.6	141.6	133.8	138.5	141.9	145.8	138.9
Discouraged jobseekers	26.4	24.8	19.0	19.7	19.5	24.9	20.9
Other	108.2	116.8	114.8	118.8	122.4	120.9	118.0
Without marginal attachment to the labour force	1,147.9	1,157.2	1,213.5	1,232.9	1,231.2	1,243.1	1,266.4
Wanted to work but were not actively looking for work and were not available to start work within four weeks	64.8	48.6	67.6	50.1	72.8	64.4	68.3
Did not want to work	958.4	987.0	1,020.6	1,058.5	1,054.7	1,072.8	1,096.5
Permanently unable to work	44.9	31.9	33.5	32.0	27.9	31.3	31.4
Institutionalised(a) and boarding school pupils	79.8	89.5	91.7	92.3	75.9	74.5	70.2
FEMALES							
Civilian population aged 15 and over	5,859.9	5,950.1	5,995.7	6,040.7	6,092.4	6,153.6	6,218.0
Employed	2,370.3	2,451.9	2,513.8	2,553.7	2,617.5	2,713.3	2,770.4
Unemployed	283.4	296.3	244.5	282.0	246.1	288.2	269.1
Persons not in the labour force	3,206.1	3,201.9	3,237.4	3,205.0	3,228.9	3,152.1	3,178.5
With marginal attachment to the labour force	602.8	595.8	563.3	555.1	573.0	547.4	584.0
Wanted to work and were actively looking for work	25.5	13.1	27.2	17.3	35.5	21.1	30.7
Were available to start work within four weeks	14.4	9.4	15.4	11.4	20.9	14.9	17.5
Were not available to start work within four weeks	11.1	3.7	11.8	5.9	14.6	6.2	13.2
Wanted to work but were not actively looking for work and were available to start work within four weeks	577.3	582.7	536.1	537.8	537.5	526.3	553.2
Discouraged jobseekers	91.8	91.3	74.7	76.3	69.6	71.9	69.6
Other	485.5	491.4	461.5	461.5	468.0	454.4	483.6
Without marginal attachment to the labour force	2,603.3	2,606.0	2,674.0	2,649.9	2,655.9	2,604.7	2,594.5
Wanted to work but were not actively looking for work and were not available to start work within four weeks	179.4	175.3	196.4	172.6	192.4	197.0	194.4
Did not want to work	2,267.0	2,288.1	2,345.0	2,340.6	2,325.4	2,268.0	2,248.8
Permanently unable to work	32.4	20.3	23.0	22.4	19.9	19.8	25.8
Institutionalised(a) and boarding school pupils	124.5	122.3	109.6	114.3	118.2	119.9	125.6
PERSONS							
Civilian population aged 15 and over	11,585.5	11,718.5	11,808.0	11,897.3	11,998.5	12,121.7	12,249.5
Employed	6,350.0	6,504.2	6,572.9	6,634.5	6,783.9	6,926.3	7,007.6
Unemployed	718.7	701.0	621.3	671.7	587.7	640.4	631.6
Persons not in the labour force	4,516.8	4,513.2	4,613.8	4,591.1	4,626.9	4,555.1	4,610.3
With marginal attachment to the labour force	765.6	750.0	726.3	708.3	739.7	707.3	749.4
Wanted to work and were actively looking for work	53.8	25.7	56.4	32.1	60.4	35.2	57.2
Were available to start work within four weeks	21.9	18.7	26.2	22.2	30.2	25.0	26.9
Were not available to start work within four weeks	31.9	7.0	30.2	9.9	30.2	10.2	30.3
Wanted to work but were not actively looking for work and were available to start work within four weeks	711.8	724.3	669.9	676.3	679.4	672.1	692.1
Discouraged jobseekers	118.2	116.1	93.7	96.0	89.0	96.8	90.5
Other	593.6	608.2	576.2	580.3	590.4	575.3	601.6
Without marginal attachment to the labour force	3,751.2	3,763.3	3,887.6	3,882.8	3,887.1	3,847.8	3,860.9
Wanted to work but were not actively looking for work and were not available to start work within four weeks	244.2	224.0	264.1	222.7	265.2	261.4	262.7
Did not want to work	3,225.4	3,275.2	3,365.6	3,399.1	3,380.1	3,340.8	3,345.3
Permanently unable to work	77.3	52.3	56.5	54.4	47.8	51.1	57.2
Institutionalised(a) and boarding school pupils	204.3	211.8	201.4	206.6	194.1	194.4	195.8

(a) Includes some patients in hospitals and sanatoria and inmates of reformatories, jails etc.

TABLE 2. PERSONS NOT IN THE LABOUR FORCE WITH MARGINAL ATTACHMENT TO THE LABOUR FORCE:
MAIN REASON FOR NOT ACTIVELY LOOKING FOR WORK, SEPTEMBER 1983 TO SEPTEMBER 1986
(' 000)

	Sept. 1983	March 1984	Sept. 1984	March 1985	Sept. 1985	March 1986	Sept. 1986
MALES							
Wanted to work and were actively looking for work	28.2	12.6	29.2	14.8	24.9	14.0	26.5
Wanted to work but were not actively looking for work and were available to start work within four weeks	134.6	141.6	133.8	138.5	141.9	145.8	138.9
<i>Main reason for not actively looking for work—</i>							
Had a job to go to	3.3	3.4	*	*	*	*	*
Personal reasons	90.7	98.4	94.0	94.7	97.5	98.5	96.9
Family reasons	3.4	3.1	4.8	5.3	4.3	*	*
Discouraged jobseekers	26.4	24.8	19.0	19.7	19.5	24.9	20.9
No jobs in suitable hours	*	*	*	*	*	*	*
Other reasons	7.0	6.1	8.0	7.4	10.6	9.8	10.6
Did not know	*	*	*	*	*	*	*
Not asked(a)	*	*	*	4.6	*	*	*
Total	162.8	154.2	163.0	153.3	166.8	159.9	165.4
FEMALES							
Wanted to work and were actively looking for work	25.5	13.1	27.2	17.3	35.5	21.1	30.7
Wanted to work but were not actively looking for work and were available to start work within four weeks	577.3	582.7	536.1	537.8	537.5	526.3	553.2
<i>Main reason for not actively looking for work—</i>							
Had a job to go to	8.0	6.9	6.1	5.7	8.4	8.3	7.6
Personal reasons	153.1	167.1	147.8	168.8	158.7	152.5	153.0
Own ill health, physical disability, pregnancy	36.1	37.0	34.8	38.9	39.5	36.3	33.6
Attending an educational institution	43.0	52.1	46.1	54.3	50.9	57.3	55.5
Had no need to work	39.7	40.2	32.9	38.2	34.0	31.0	32.3
Give others a chance	9.7	9.9	8.2	8.5	6.0	4.0	6.4
Welfare payments/pension may be affected	14.4	15.6	13.5	17.6	14.7	14.8	12.9
Moved house/holidays	10.2	12.2	12.3	11.3	13.6	9.2	12.2
Family reasons	273.8	259.4	258.3	232.9	244.1	237.8	263.5
Ill health of other than self	12.6	9.6	14.1	8.7	13.2	12.4	11.0
Unable to find suitable childcare	220.3	210.9	131.6	113.6	124.6	116.3	138.7
Children too young/preferred to look after children	40.9	38.9	37.1	37.9	34.4	39.8	42.0
Other family considerations	91.8	91.3	74.7	76.3	69.6	71.9	69.6
Discouraged jobseekers	17.9	22.6	19.3	22.5	22.4	24.3	20.1
Considered too young or too old by employers	*	3.5	4.4	4.1	4.2	4.2	*
Difficulties with language or ethnic background	7.2	8.4	7.9	10.0	7.4	9.8	8.6
Lacked necessary schooling, training, skills or experience	30.8	34.1	23.4	27.4	21.6	22.9	27.8
No jobs in locality or line of work	33.5	22.8	19.7	12.4	14.0	10.7	9.7
No jobs at all	14.3	20.8	17.4	15.8	15.6	16.4	15.4
No jobs in suitable hours	20.2	22.0	21.4	22.3	25.6	24.8	30.3
Other reasons	7.4	7.9	3.6	8.7	7.2	7.8	5.8
Did not know	8.7	7.3	6.8	7.2	8.3	6.7	8.0
Not asked(a)							
Total	602.8	595.8	563.3	555.1	573.0	547.4	584.0
PERSONS							
Wanted to work and were actively looking for work	53.8	25.7	56.4	32.1	60.4	35.2	57.2
Wanted to work but were not actively looking for work and were available to start work within four weeks	711.8	724.3	669.9	676.3	679.4	672.1	692.1
<i>Main reason for not actively looking for work—</i>							
Had a job to go to	11.4	10.3	8.8	9.1	11.2	11.7	9.9
Personal reasons	243.8	265.5	241.8	263.5	256.2	251.0	249.9
Own ill health, physical disability, pregnancy	61.9	62.2	60.6	65.8	69.1	63.0	56.5
Attending an educational institution	82.9	104.8	93.4	104.9	102.3	111.1	106.9
Had no need to work	50.5	49.5	41.5	44.7	41.3	38.2	40.0
Give others a chance	11.2	11.0	9.3	9.1	6.2	4.5	7.4
Welfare payments/pension may be affected	22.1	21.7	17.4	24.2	19.6	19.6	21.3
Moved house/holidays	15.2	16.3	19.6	14.7	17.8	14.7	17.8
Family reasons	277.2	262.5	263.1	238.2	248.4	241.4	267.3
Ill health of other than self	13.4	10.1	15.2	11.0	14.8	12.9	11.6
Unable to find suitable childcare	222.4	212.1	132.9	115.0	126.1	117.5	140.2
Children too young/preferred to look after children	41.4	40.3	38.7	38.6	34.9	40.9	43.0
Other family considerations	118.2	116.1	93.7	96.0	89.0	96.8	90.5
Discouraged jobseekers	29.0	34.5	26.9	31.0	32.2	37.6	31.3
Considered too young or too old by employers	*	3.8	5.7	4.7	5.0	5.2	4.0
Difficulties with language or ethnic background	8.4	10.0	8.9	11.2	8.9	11.5	10.2
Lacked necessary schooling, training, skills or experience	38.2	40.7	29.0	33.0	26.0	29.1	33.3
No jobs in locality or line of work	39.7	27.1	23.2	16.1	16.8	13.4	11.7
No jobs at all	15.1	22.9	19.3	17.7	18.4	17.5	16.5
No jobs in suitable hours	27.2	28.2	29.5	29.7	36.4	34.6	40.9
Other reasons	8.1	9.5	4.2	10.3	8.0	9.0	6.6
Did not know	10.9	9.3	9.5	11.9	12.0	10.1	10.7
Not asked(a)							
Total	765.6	750.0	726.3	708.3	739.7	707.3	749.4

(a) Persons who had a job but, up to the end of the survey week, had been away from work without pay for four weeks or longer and had not been actively looking for work.

**TABLE 3. PERSONS NOT IN THE LABOUR FORCE WITH MARGINAL ATTACHMENT TO THE LABOUR FORCE:
SUMMARY OF CHARACTERISTICS, SEPTEMBER 1983 TO SEPTEMBER 1986
(' 000)**

	Sept. 1983	March 1984	Sept. 1984	March 1985	Sept. 1985	March 1986	Sept. 1986
<i>Age group—</i>							
15-19	127.2	123.2	131.3	120.9	138.3	131.6	150.1
20-24	75.6	80.3	77.6	76.7	75.7	68.1	72.2
25-34	221.0	217.3	203.4	189.1	203.8	187.6	196.2
35-44	157.9	147.6	146.4	149.2	146.1	141.8	151.9
45-54	81.9	87.5	84.2	84.0	82.6	84.3	82.6
55-59	37.6	37.1	35.2	35.0	39.8	38.5	33.2
60-64	34.0	28.3	24.7	26.3	24.2	27.3	28.6
65 and over	30.6	28.6	23.4	27.0	29.1	27.9	34.6
<i>Time since last job—</i>							
Had had a job		640.7	609.7	606.7	612.0	596.5	621.2
Under 12 months		154.7	152.7	149.8	160.2	159.6	173.3
Under 6 months		102.9	87.4	98.9	91.7	110.7	98.0
6 and under 12 months			51.8	65.3	68.5	48.9	75.4
1 and under 3 years		n.a.	148.7	135.3	126.7	111.9	116.6
3 and under 5 years			95.5	89.2	95.8	92.4	88.2
5 and under 10 years			128.6	119.4	114.8	122.3	121.9
10 and under 20 years			83.5	87.1	85.7	92.1	88.7
20 years or more			29.6	25.9	33.9	26.1	29.0
Had never had a job		109.3	116.7	101.7	127.7	110.8	128.2
<i>Whether looked for work in the last twelve months(a)—</i>							
Had looked for work	215.2	193.8	207.8	176.9	214.0	188.4	199.5
Less than 5 weeks ago	96.3	75.4	95.5	75.6	100.6	78.9	96.4
5 and less than 8 weeks ago	44.6	48.6	46.7	41.8	39.3	42.8	39.2
8 and less than 13 weeks ago	27.9	32.1	25.7	25.7	30.9	29.9	25.4
13 to 52 weeks ago	46.4	37.7	39.9	33.8	43.1	36.8	38.5
Had not looked for work	550.4	556.1	518.6	531.5	525.7	518.9	549.8
<i>Intention to look for work in the next twelve months—</i>							
Intended to look	280.2	301.3	272.9	266.1	275.6	279.6	288.4
Might look	112.6	129.1	116.1	130.3	134.8	125.1	126.3
Did not intend to look	263.0	243.4	229.6	222.8	208.5	213.4	230.2
Did not know	33.8	30.9	33.0	36.2	37.2	32.3	26.7
Not asked(b)	76.0	45.3	74.8	53.0	83.6	56.9	77.8
<i>Type of work preferred—</i>							
Full-time	189.4	164.1	176.9	162.6	179.7	149.9	176.6
Part-time	543.7	561.2	529.2	522.6	531.1	531.6	539.7
No preference	32.4	24.6	20.2	23.2	28.9	25.8	33.1
Total	765.6	750.0	726.3	708.3	739.7	707.3	749.4
Males	162.8	154.2	163.0	153.3	166.8	159.9	165.4
Females	602.8	595.8	563.3	555.1	573.0	547.4	584.0

(a) Persons who had left a job in the last twelve months were only asked whether they had looked for work since that job. (b) Comprises persons who had a job to go to, persons who took active steps to find work and persons who had a job but, up to the end of the survey week, had been away from work without pay for four weeks or longer and had not been actively looking for work.

**TABLE 4. PERSONS NOT IN THE LABOUR FORCE WHO WERE DISCOURAGED JOBSEEKERS : AGE,
SEPTEMBER 1983 TO SEPTEMBER 1986
(' 000)**

Age group	Sept. 1983	March 1984	Sept. 1984	March 1985	Sept. 1985	March 1986	Sept. 1986
15-19	6.6	10.0	8.4	8.1	5.3	7.2	7.1
20-24	6.3	6.7	5.1	5.1	5.4	6.0	*
25-34	22.5	19.3	13.8	15.6	14.0	12.7	12.8
35-44	26.7	21.2	19.1	17.8	17.2	18.1	18.6
45-54	22.6	27.2	19.9	18.4	17.9	18.4	13.9
55-59	9.0	10.5	10.1	11.5	11.5	11.9	8.7
60-64	11.4	8.9	6.6	8.7	5.7	7.8	10.9
65 and over	13.1	12.3	10.7	10.7	12.0	14.7	15.6
Total	118.2	116.1	93.7	96.0	89.0	96.8	90.5

TABLE 5. PERSONS NOT IN THE LABOUR FORCE(a) : OCCUPATION IN LAST JOB AND MAIN ACTIVITY, SEPTEMBER 1986 ('000)

Occupation in last job	Main activity								Total
	Housewife/ home duties	Attending an educa- tional institution	Retired/ voluntarily inactive	Own illness/ injury; own disability/ handicap	Looking after ill/ disabled person	Travel/ moving house	Worked in unpaid voluntary job	Other(b)	
MALES									
Last job less than 20 years ago	45.4	82.9	672.9	180.3	7.6	12.4	21.1	26.5	1,049.0
Managers and administrators	4.2	*	111.9	12.9	*	*	4.3	*	142.2
Professionals	*	7.8	51.5	5.6	*	*	*	*	76.0
Para-professionals	*	4.1	34.1	6.5	*	*	*	*	49.2
Trades persons	11.5	5.4	156.0	46.4	*	*	*	5.2	232.3
Clerks	*	8.2	63.2	7.0	*	*	*	*	88.2
Sales persons and personal service workers	*	16.2	39.9	8.9	*	*	*	*	74.0
Plant and machine operators, and drivers	4.9	4.1	65.9	24.6	*	*	*	*	104.6
Labourers and related workers	13.4	35.3	150.4	68.4	*	*	*	8.4	282.5
Last job 20 or more years ago	*	*	50.0	15.3	*	*	*	*	68.7
Had never had a job	*	223.7	*	14.1	*	*	*	*	243.9
Total	48.7	306.7	726.6	209.7	7.6	12.6	22.0	27.8	1,361.6
FEMALES									
Last job less than 20 years ago	1,532.1	76.2	97.6	54.6	15.4	10.1	26.6	13.5	1,826.1
Managers and administrators	67.6	*	9.0	4.9	*	*	*	*	89.7
Professionals	93.0	6.5	8.7	*	*	*	*	*	119.0
Para-professionals	62.9	*	*	*	*	*	*	*	75.2
Trades persons	81.1	*	6.1	4.9	*	*	*	*	96.2
Clerks	397.1	15.3	24.5	9.8	*	*	6.2	*	463.5
Sales persons and personal service workers	366.2	37.5	20.3	7.9	*	*	5.3	*	444.4
Plant and machine operators, and drivers	104.6	*	4.8	6.3	*	*	*	*	118.8
Labourers and related workers	359.6	11.6	20.4	15.1	4.0	*	4.0	*	419.3
Last job 20 or more years ago	627.2	*	70.2	32.9	5.3	*	10.8	*	751.0
Had never had a job	219.1	215.1	18.2	16.4	*	*	*	*	475.8
Total	2,378.4	292.0	186.0	103.8	22.0	12.3	40.8	17.6	3,052.9
PERSONS									
Last job less than 20 years ago	1,577.5	159.0	770.5	234.9	23.0	22.5	47.7	40.0	2,875.1
Managers and administrators	71.8	*	120.9	17.8	*	*	8.0	5.1	231.9
Professionals	96.7	14.2	60.2	8.3	*	*	6.8	5.0	195.0
Para-professionals	64.4	6.2	37.9	9.4	*	*	*	*	124.5
Trades persons	92.6	6.6	162.1	51.3	*	*	5.0	5.9	328.6
Clerks	399.9	23.6	87.7	16.8	4.3	5.4	9.0	5.0	551.7
Sales persons and personal service workers	369.5	53.7	60.2	16.8	*	*	6.9	4.0	518.4
Plant and machine operators, and drivers	109.6	4.9	70.7	30.9	*	*	*	*	223.4
Labourers and related workers	373.0	46.8	170.8	83.5	5.8	4.0	6.7	11.2	701.7
Last job 20 or more years ago	629.7	*	120.2	48.2	5.3	*	11.5	*	819.8
Had never had a job	219.9	438.9	21.9	30.5	*	*	*	*	719.6
Total	2,427.1	598.7	912.6	313.5	29.5	24.9	62.8	45.4	4,414.5

(a) Excludes students boarding at school, some patients in hospitals and sanatoria and inmates of reformatories, jails, etc. (b) Includes unpaid leave.

TABLE 6. PERSONS NOT IN THE LABOUR FORCE WHO HAD HAD A JOB : REASON FOR CEASING LAST JOB AND TIME SINCE LAST JOB, SEPTEMBER 1986
(' 000)

Reason for ceasing last job	Time since last job							Total
	Under 6 months	6 and under 12 months	1 and under 3 years	3 and under 5 years	5 and under 10 years	10 and under 20 years	20 years or more	
Job loser	91.0	76.1	162.4	140.3	215.9	184.2	83.0	952.9
Retrenched	26.1	21.2	38.0	42.4	57.3	46.3	19.2	250.5
Job was temporary or seasonal and did not leave to return to studies	37.5	23.0	23.9	15.0	17.3	15.6	9.2	141.4
Own ill health or injury	23.2	28.9	92.2	77.9	133.6	116.4	51.1	523.4
Business closed down for economic reasons	4.1	*	8.3	4.9	7.7	5.9	*	37.7
Job leaver	136.3	164.6	302.7	283.4	537.2	555.9	736.8	2,716.8
Unsatisfactory work arrangements	15.2	10.0	15.7	11.6	9.7	9.2	4.1	75.5
Job was temporary or seasonal and left to return to studies	10.4	20.3	5.5	*	*	*	*	37.6
Retired/didn't want to work any longer	36.5	35.8	122.0	137.3	300.4	310.3	153.7	1,096.0
Returned to studies	12.7	33.8	14.6	4.7	*	*	*	69.0
To get married	*	*	4.5	7.9	20.3	46.9	389.8	471.7
Pregnancy/to have children	24.5	33.8	81.1	64.7	118.2	99.1	87.8	509.2
To look after family, house or someone else	7.0	7.2	23.3	18.2	32.9	40.3	69.2	198.1
To have holiday/to move house/spouse transferred	14.6	14.6	21.1	24.0	34.6	31.4	16.8	157.0
Business closed down for other reasons	5.9	*	7.2	7.4	11.2	10.8	7.2	53.0
Other	9.0	*	7.9	6.8	7.4	6.6	8.0	49.5
Not asked(a)	25.2	*	*	*	*	*	*	25.2
Total	252.4	240.7	465.1	423.7	753.0	740.1	819.8	3,694.8
Males	85.6	82.9	177.4	166.4	292.9	243.8	68.7	1,117.7
Females	166.9	157.8	287.7	257.2	460.1	496.3	751.0	2,577.1

(a) Persons who had a job but, up to the end of the survey week, had been away from work without pay for four weeks or longer and had not been actively looking for work.

TABLE 7. PERSONS NOT IN THE LABOUR FORCE WHO HAD HAD A JOB : REASON FOR CEASING LAST JOB, STATUS OF WORKER IN LAST JOB AND FULL-TIME OR PART-TIME STATUS IN LAST JOB, SEPTEMBER 1986
(' 000)

Reason for ceasing last job	Last job less than 20 years ago							Last job 20 or more years ago	Total
	Status of worker in last job				Full-time or part-time status in last job				
	Employers	Self-employed	Wage and salary earners	Unpaid family helpers	Full-time	Part-time	Varied/did not know		
Job loser	22.9	57.6	787.6	*	602.5	256.4	11.0	83.0	952.9
Retrenched	*	6.0	222.5	*	136.0	91.5	*	19.2	250.5
Job was temporary or seasonal and did not leave to return to studies	*	*	128.3	*	50.7	78.6	*	9.2	141.4
Own ill health or injury	15.2	35.8	420.8	*	392.8	76.0	*	51.1	523.4
Business closed down for economic reasons	4.6	13.2	15.9	*	23.0	10.2	*	*	37.7
Job leaver	73.0	122.0	1,781.6	*	1,461.6	503.4	15.0	736.7	2,716.8
Unsatisfactory work arrangements	*	*	68.0	*	34.1	37.2	*	4.1	75.5
Job was temporary or seasonal and left to return to studies	*	*	37.6	*	17.6	19.5	*	*	37.6
Retired/didn't want to work any longer	49.2	86.5	805.0	*	763.1	173.0	6.3	153.7	1,096.0
Returned to studies	*	*	67.4	*	34.8	33.0	*	*	69.0
To get married	*	*	81.0	*	73.8	8.1	*	389.8	471.7
Pregnancy/to have children	*	4.9	413.7	*	329.5	89.8	*	87.8	509.2
To look after family, house or someone else	*	5.3	119.6	*	74.0	53.0	*	69.2	198.1
To have holiday/to move house/spouse transferred	*	5.4	131.6	*	79.3	59.2	*	16.8	157.0
Business closed down for other reasons	11.9	14.2	18.7	*	31.3	13.9	*	7.2	53.0
Other	*	*	38.9	*	24.1	16.8	*	8.0	49.5
Not asked(a)	*	*	25.2	*	17.5	6.9	*	*	25.2
Total	95.9	179.5	2,594.4	5.3	2,081.6	766.7	26.7	819.8	3,694.8
Males	50.8	95.9	900.9	*	930.1	111.8	7.1	68.7	1,117.7
Females	45.1	83.6	1,693.5	*	1,151.5	654.9	19.7	751.0	2,577.1

(a) Persons who had a job but, up to the end of the survey week, had been away from work without pay for four weeks or longer and had not been actively looking for work.

TABLE 8. PERSONS NOT IN THE LABOUR FORCE WHO WANTED TO WORK : INTENTION TO LOOK FOR WORK IN THE NEXT TWELVE MONTHS AND AGE, SEPTEMBER 1986
(* 000)

<i>Intention to look for work in the next twelve months</i>	<i>Age group</i>								<i>Total</i>
	<i>15-19</i>	<i>20-24</i>	<i>25-34</i>	<i>35-44</i>	<i>45-54</i>	<i>55-59</i>	<i>60-64</i>	<i>65 and over</i>	
MALES									
Intended to look	51.1	9.8	9.5	9.5	7.1	*	4.0	4.5	99.3
Might look	11.5	*	*	5.7	4.7		6.7		33.5
Did not intend to look	18.3	*	6.7		4.2	5.9	9.9	12.2	58.7
Did not know	*	*	*	*	*	*	*	*	8.2
Not asked(a)	17.6	4.8	4.4	*	4.6		*	*	34.0
Total	100.5	18.5	20.9	21.9	18.4	13.9	18.1	21.5	233.7
FEMALES									
Intended to look	62.1	31.5	81.8	60.7	22.9	7.2	*	*	269.9
Might look	14.8	11.9	43.0	40.5	23.0	5.7	5.7		144.7
Did not intend to look	21.1	26.0	99.9	57.7	31.0	15.9	10.4	13.7	275.7
Did not know	4.3		10.0	6.3	5.0	*	*	*	29.7
Not asked(a)	12.2	8.3	23.0	10.1	4.0	*	*	*	58.3
Total	111.0	81.2	257.7	175.3	86.0	30.8	17.4	19.1	778.3
PERSONS									
Intended to look	113.1	41.4	91.3	70.2	30.0	11.0	6.3	6.0	369.2
Might look	26.3	14.1	45.8	46.2	26.4	7.0	6.2	6.2	178.1
Did not intend to look	39.4	27.5	102.7	61.6	35.2	21.9	20.3	25.9	334.5
Did not know	6.5		11.4	7.1	6.4	*	4.5		37.9
Not asked(a)	29.8	13.1	27.4	12.1	6.4	*	*	*	92.3
Total	211.5	99.7	278.6	197.2	104.4	44.7	35.5	40.5	1,012.0

(a) Comprises persons who had a job to go to, persons who took active steps to find work and persons who had a job but, up to the end of the survey week, had been away from work without pay for four weeks or longer and had not been actively looking for work.

TABLE 9. PERSONS NOT IN THE LABOUR FORCE WHO WANTED TO WORK : TYPE OF WORK PREFERRED AND AGE, SEPTEMBER 1986
(* 000)

<i>Type of work preferred</i>	<i>Age group</i>								<i>Total</i>
	<i>15-19</i>	<i>20-24</i>	<i>25-34</i>	<i>35-44</i>	<i>45-54</i>	<i>55-59</i>	<i>60-64</i>	<i>65 and over</i>	
MALES									
Full-time	52.5	13.4	16.4	14.9	10.3	5.4	5.3		118.3
Part-time	44.4	4.6	*	5.8	5.6	6.5	12.4	17.6	99.8
No preference	4.2		*	*	4.6		4.2		15.7
Total	100.5	18.5	20.9	21.9	18.4	13.9	18.1	21.5	233.7
FEMALES									
Full-time	46.5	20.4	35.7	21.5	12.6	*	*	*	140.8
Part-time	62.5	55.8	210.1	143.6	69.2	26.2	15.8	17.4	600.6
No preference	*	5.0	11.9	10.2	4.2	*	*	*	36.9
Total	111.0	81.2	257.7	175.3	86.0	30.8	17.4	19.1	778.3
PERSONS									
Full-time	99.0	33.8	52.1	36.5	22.9	7.5	4.7	*	259.1
Part-time	106.8	60.4	213.0	149.4	74.8	32.8	28.2	35.0	700.4
No preference	5.7	5.5	13.5	11.3	6.7	4.5	5.4		52.6
Total	211.5	99.7	278.6	197.2	104.4	44.7	35.5	40.5	1,012.0

TABLE 10. PERSONS NOT IN THE LABOUR FORCE WITH MARGINAL ATTACHMENT TO THE LABOUR FORCE: MAIN REASON FOR NOT ACTIVELY LOOKING FOR WORK, INTENTION TO LOOK FOR WORK IN THE NEXT TWELVE MONTHS AND TYPE OF WORK PREFERRED, SEPTEMBER 1986 ('000)

	<i>Intention to look for work in the next twelve months</i>					<i>Type of work preferred</i>			<i>Total</i>
	<i>Intended to look</i>	<i>Might look</i>	<i>Did not intend to look</i>	<i>Did not know</i>	<i>Not asked(a)</i>	<i>Full-time</i>	<i>Part-time</i>	<i>No preference</i>	
Wanted to work and were actively looking for work	57.2	34.0	20.6	*	57.2
Were available to start work within four weeks	26.9	13.0	12.1	*	26.9
Were not available to start work within four weeks	30.3	21.0	8.5	*	30.3
Wanted to work but were not actively looking for work and were available to start work within four weeks	288.4	126.3	230.2	26.7	20.5	142.5	519.1	30.5	692.1
<i>Main reason for not actively looking for work—</i>									
Had a job to go to	9.9	5.0	4.8	*	9.9
Personal reasons	124.0	42.8	75.3	7.9	..	70.5	169.5	9.9	249.9
Own ill health, physical disability, pregnancy	23.3	11.5	19.1	*	..	14.4	37.4	4.7	56.5
Attending an educational institution	69.1	14.7	21.7	*	..	41.1	64.6	*	106.9
Had no need to work	11.0	8.1	18.6	*	..	*	35.9	*	40.0
Give others a chance	*	*	4.1	*	..	*	7.1	*	7.4
Welfare payments/pension may be affected	4.3	4.8	11.1	*	..	4.7	15.4	*	21.3
Moved house/holidays	15.4	*	*	*	..	7.4	9.2	*	17.8
Family reasons	88.8	55.7	110.6	12.1	..	29.5	229.3	8.5	267.3
Ill health of other than self	4.2	*	*	*	..	*	9.6	*	11.6
Unable to find suitable childcare	18.6	9.3	41.0	*	..	8.7	61.6	*	72.6
Children too young/preferred to look after children	50.7	31.1	52.7	5.7	..	14.3	122.6	*	140.2
Other family considerations	15.3	11.5	13.8	*	..	5.2	35.5	*	43.0
Discouraged jobseekers	39.2	15.8	30.4	5.0	..	19.4	64.0	7.1	90.5
Considered too young or too old by employers	6.6	5.0	17.4	*	..	5.1	24.0	*	31.3
Difficulties with language or ethnic background	*	*	*	*	..	*	*	*	4.0
Lacked necessary schooling, training, skills or experience	5.1	*	*	*	..	*	6.7	*	10.2
No jobs in locality or line of work	20.1	4.3	7.8	*	..	8.6	21.7	*	33.3
No jobs at all	5.7	*	*	*	..	*	9.8	*	11.7
No jobs in suitable hours	9.8	*	*	*	..	*	15.5	*	16.5
Other reasons	23.4	6.6	9.7	*	..	12.1	26.7	*	40.9
Did not know	*	*	*	*	..	*	4.8	*	6.6
Not asked(b)	10.7	4.3	4.5	*	10.7
Total	288.4	126.3	230.2	26.7	77.8	176.6	539.7	33.1	749.4

(a) Comprises persons who had a job to go to, persons who took active steps to find work and persons as defined in footnote(b). (b) Persons who had a job but, up to the end of the survey week, had been away from work without pay for four weeks or longer and had not been actively looking for work.

TABLE 11. PERSONS NOT IN THE LABOUR FORCE WITH MARGINAL ATTACHMENT TO THE LABOUR FORCE : TIME SINCE LAST JOB AND WHETHER LOOKED FOR WORK IN THE LAST TWELVE MONTHS(a), SEPTEMBER 1986 ('000)

<i>Time since last job</i>	<i>Had looked for work in the last 12 months</i>				<i>Total</i>	<i>Had not looked for work in the last 12 months</i>	<i>Total</i>
	<i>Less than 5 weeks ago</i>	<i>5 and less than 8 weeks ago</i>	<i>8 and less than 13 weeks ago</i>	<i>13 to 52 weeks ago</i>			
Had had a job	69.0	32.2	19.2	28.9	149.3	471.9	621.2
Under 12 months	33.1	12.8	5.1	4.4	55.5	117.9	173.3
Under 6 months	20.1	7.7	*	*	30.0	68.0	98.0
6 and under 12 months	13.0	5.1	7.4	..	25.5	49.9	75.4
1 and under 3 years	14.3	5.8	4.5	7.3	31.9	84.8	116.6
3 and under 5 years	7.2	4.2	*	6.0	20.8	67.4	88.2
5 and under 10 years	8.1	5.0	*	6.6	23.3	98.7	122.0
10 and under 20 years	4.6	4.1	5.6	..	14.3	76.4	90.7
20 years or more	*	*	*	*	*	26.7	30.3
Had never had a job	27.4	7.0	6.2	9.6	50.3	77.9	128.2
Total	96.4	39.2	25.4	38.5	199.5	549.8	749.4

(a) Persons who had left a job in the last twelve months were only asked whether they had looked for work since that job.

TABLE 12. PERSONS NOT IN THE LABOUR FORCE WITH MARGINAL ATTACHMENT TO THE LABOUR FORCE : WHETHER LOOKED FOR WORK IN THE LAST TWELVE MONTHS(a) AND FAMILY STATUS, SEPTEMBER 1986 (' 000)

Whether looked for work in the last twelve months(a)	Family status										
	Member of a family										
	Husband or wife			Not-married family head	Full-time student aged 15-24(b)	Other child(c) of family head	Other relative of family head	Total	Not a member of a family	Not family coded	Total
	With dependent children present	Without dependent children present	Total								
MALES											
Had looked for work	6.5	7.5	14.0	*	27.7	6.7	*	51.1	6.3	5.5	62.9
Less than 5 weeks ago	*	*	7.0	*	17.8	*	*	29.6	4.4	*	36.5
5 and less than 8 weeks ago	*	*	4.3	*	5.3	*	*	8.0	*	*	9.9
8 and less than 13 weeks ago	*	*		*		*	4.8	*	6.4		
13 to 52 weeks ago	*	*	*	*	4.6	*	*	8.7	*	*	10.2
Had not looked for work	10.3	22.9	33.2	*	36.8	5.6	*	79.6	14.3	8.6	102.5
Total	16.8	30.4	47.3	*	64.5	12.3	*	130.7	20.6	14.1	165.4
FEMALES											
Had looked for work	57.4	13.3	70.7	21.7	26.4	4.2	*	123.4	5.2	8.1	136.7
Less than 5 weeks ago	23.0	6.0	29.0	9.2	13.0	*	*	54.5	*	*	59.9
5 and less than 8 weeks ago	13.5	5.3	16.6	4.7	4.7	*	*	26.5	*	*	29.4
8 and less than 13 weeks ago	7.3			9.4	*	*	*	17.0	*	19.0	
13 to 52 weeks ago	13.6	*	15.7	4.4	4.8	*	*	25.4	*	*	28.4
Had not looked for work	233.3	59.3	292.7	61.6	36.7	5.6	*	399.1	23.7	24.5	447.3
Total	290.7	72.7	363.4	83.3	63.0	9.7	*	522.5	28.8	32.6	584.0
PERSONS											
Had looked for work	64.0	20.8	84.8	23.2	54.1	10.9	*	174.5	11.5	13.6	199.5
Less than 5 weeks ago	26.6	9.4	36.0	9.8	30.9	6.8	*	84.1	6.6	5.7	96.4
5 and less than 8 weeks ago	14.5	4.9	19.5	4.7	7.9	*	*	34.5	*	5.1	39.2
8 and less than 13 weeks ago	8.2	*	10.9	4.1	5.9	*	*	21.8	*		25.4
13 to 52 weeks ago	14.6	*	18.4	4.6	9.4	*	*	34.1	*	*	38.5
Had not looked for work	243.6	82.2	325.9	63.7	73.5	11.2	4.6	478.8	38.0	33.1	549.8
Total	307.6	103.1	410.7	86.9	127.5	22.0	6.1	653.2	49.4	46.7	749.4

(a) Persons who had left a job in the last twelve months were only asked whether they had looked for work since that job. (b) Excludes persons aged 20-24 attending school. (c) Aged 15 and over

TABLE 13. PERSONS NOT IN THE LABOUR FORCE WITH MARGINAL ATTACHMENT TO THE LABOUR FORCE : TYPE OF WORK PREFERRED AND FAMILY STATUS, SEPTEMBER 1986 (' 000)

Type of work preferred	Family status										
	Member of a family										
	Husband or wife			Not-married family head	Full-time student aged 15-24(a)	Other child(b) of family head	Other relative of family head	Total	Not a member of a family	Not family coded	Total
	With dependent children present	Without dependent children present	Total								
MALES											
Full-time	11.3	6.9	18.3	*	31.9	9.7	*	63.8	7.7	6.8	78.3
Part-time	4.0	20.7	24.7	*	32.3	*	*	60.9	11.0	6.5	78.3
No preference	*	*	4.3	*	*	*	*	6.1	*	*	8.8
Total	16.8	30.4	47.3	*	64.5	12.3	*	130.7	20.6	14.1	165.4
FEMALES											
Full-time	25.0	9.7	34.8	19.1	24.4	6.8	*	85.2	6.3	6.8	98.3
Part-time	255.2	58.3	313.5	60.2	37.4	*	*	415.4	21.0	25.0	461.4
No preference	10.5	4.7	15.2	4.0	*	*	*	21.9	*	*	24.3
Total	290.7	72.7	363.4	83.3	63.0	9.7	*	522.5	28.8	32.6	584.0
PERSONS											
Full-time	36.4	16.7	53.0	20.9	56.3	16.5	*	149.1	14.0	13.6	176.6
Part-time	259.2	79.0	338.2	61.6	69.7	4.2	*	476.2	32.0	31.5	539.7
No preference	12.0	7.4	19.4	4.4	*	*	*	28.0	*	*	33.1
Total	307.6	103.1	410.7	86.9	127.5	22.0	6.1	653.2	49.4	46.7	749.4

(a) Excludes persons aged 20-24 attending school. (b) Aged 15 and over.

TABLE 14. PERSONS NOT IN THE LABOUR FORCE WITH MARGINAL ATTACHMENT TO THE LABOUR FORCE : SUMMARY OF CHARACTERISTICS, SEPTEMBER 1986 (' 000)

	Persons who wanted to work and were actively looking for work			Persons who wanted to work but were not actively looking for work and were available to start work within four weeks			Persons with marginal attachment to the labour force		
	Were available to start work within four weeks	Were not available to start work within four weeks	Total	Discouraged job-seekers	Other	Total	Males	Females	Persons
<i>Age group—</i>									
15-19	7.1	20.0	27.0	7.1	115.9	123.1	72.7	77.3	150.1
20-24	*	5.3	8.5	*	60.8	63.7	11.6	60.6	72.2
25-34	7.6	*	10.4	12.8	173.0	185.7	13.5	182.7	196.2
35-44	4.7	*	6.0	18.6	127.3	145.9	13.3	138.6	151.9
45-54	*	*	*	13.9	65.8	79.7	11.9	70.7	82.6
55-59	*	*	*	8.7	22.7	31.4	8.8	24.3	33.2
60-64	*	*	*	10.9	17.3	28.2	14.0	14.6	28.6
65 and over	*	*	*	15.6	18.8	34.4	19.5	15.1	34.6
<i>Family status—</i>									
Member of a family	21.9	26.6	48.5	73.5	531.2	604.7	130.7	522.5	653.2
Husband or wife	11.8	4.0	15.8	51.8	343.1	394.8	47.3	363.4	410.7
With dependent children present	10.2	*	12.2	26.0	269.3	295.3	16.8	290.7	307.6
Without dependent children present	*	*	*	25.7	73.8	99.5	30.4	72.7	103.1
Not-married family head	*	*	4.0	12.1	70.7	82.9	*	83.3	86.9
With dependent children present	*	*	*	8.1	65.6	73.7	*	74.4	77.3
Without dependent children present	*	*	*	4.1	5.1	9.2	*	8.8	9.6
Full-time student aged 15-24(a)	4.2	20.7	24.9	4.5	98.1	102.6	64.5	63.0	127.5
Other child(b) of family head	*	*	*	*	15.1	18.4	12.3	9.7	22.0
Other relative of family head	*	*	*	*	4.1	6.0	*	*	6.1
Not a member of a family	*	*	*	12.5	33.2	45.7	20.6	28.8	49.4
Living alone	*	*	*	10.7	22.4	33.2	13.8	20.5	34.2
Not living alone	*	*	*	*	10.8	12.5	6.9	8.3	15.2
Not family coded	*	*	5.0	4.4	37.3	41.7	14.1	32.6	46.7
<i>Type of work preferred—</i>									
Full-time	13.0	21.0	34.0	19.4	123.2	142.5	78.3	98.3	176.6
Part-time	12.1	8.5	20.6	64.0	455.1	519.1	78.3	461.4	539.7
No preference	*	*	*	7.1	23.4	30.5	8.8	24.3	33.1
<i>Whether looked for work in the last 12 months(c)—</i>									
Had looked for work	26.9	30.3	57.2	27.1	115.2	142.3	62.9	136.7	199.5
Less than 5 weeks ago	26.9	30.3	57.2	9.6	29.6	39.1	36.5	59.9	96.4
5 and less than 8 weeks ago	6.9	32.3	39.2	9.9	29.4	39.2
8 and less than 13 weeks ago	4.2	21.2	25.4	6.4	19.0	25.4
13 to 52 weeks ago	6.4	32.1	38.5	10.2	28.4	38.5
Had not looked for work	63.4	486.4	549.8	102.5	447.3	549.8
<i>Time since last job—</i>									
Had had a job	21.9	14.1	36.0	81.9	503.3	585.2	110.3	510.9	621.2
Under 12 months	12.0	9.1	21.1	12.9	139.3	152.2	49.9	123.5	173.3
Under 6 months	8.0	*	11.9	6.2	79.9	86.1	29.6	68.4	98.0
6 and under 12 months	4.0	5.2	9.2	6.8	59.4	66.2	20.3	55.1	75.4
1 and under 3 years	4.6	*	8.2	12.1	96.4	108.4	26.4	90.3	116.6
3 and under 5 years	4.5	*	8.2	14.3	71.0	85.3	12.8	75.5	88.2
5 and under 10 years	*	*	5.7	20.9	98.3	119.2	12.4	109.6	122.0
10 and under 20 years	*	*	*	14.4	75.5	90.0	7.3	83.4	90.7
20 years or more	*	*	*	7.3	22.8	30.1	*	28.8	30.3
Had never had a job	5.0	16.2	21.3	8.6	98.3	106.9	55.1	73.0	128.2
<i>Reason for ceasing last job—</i>									
Had had a job	21.9	14.1	36.0	81.9	492.6	574.5	107.6	502.9	610.5
Job loser	10.5	*	12.8	35.1	144.7	179.8	51.1	141.5	192.6
Retrenched	4.6	*	5.1	15.8	53.7	69.5	18.5	56.1	74.6
Job was temporary or seasonal and did not leave to return to studies	*	*	4.7	10.2	42.1	52.3	7.3	49.6	56.9
Own ill health or injury	*	*	*	6.8	41.7	48.5	22.0	28.7	50.8
Business closed down for economic reasons	*	*	*	*	7.2	9.6	*	7.0	10.3
Job leaver	11.3	11.9	23.2	46.8	347.9	394.7	56.5	361.4	417.9
Retired/didn't want to work any longer	*	*	*	11.0	33.3	44.3	20.4	24.6	45.0
Job was temporary or seasonal and left to return to studies	*	*	*	*	8.5	8.6	6.2	5.9	12.1
Unsatisfactory work arrangements	*	*	*	4.3	26.9	31.1	7.3	26.9	34.2
Returned to studies	*	5.9	6.2	*	10.8	11.0	8.0	9.3	17.3
To get married	*	*	*	5.9	30.0	36.0	*	36.6	36.6
Pregnancy/to have children	*	*	*	8.1	142.0	150.1	*	153.1	153.3
To look after family, house or someone else	*	*	*	4.8	29.2	34.0	*	33.2	35.0
To have holiday/to move house/spouse transferred	*	*	*	9.2	44.0	53.2	5.2	51.2	56.3
Business closed down for other reasons	*	*	*	*	10.0	11.8	*	9.0	12.1
Other	*	*	*	*	13.3	14.5	4.2	11.7	15.9
Had never had a job	5.0	16.2	21.3	8.6	98.3	106.9	55.1	73.0	128.2
Not asked(d)	*	*	*	*	10.7	10.7	*	8.0	10.7
Total	26.9	30.3	57.2	90.5	601.6	692.1	165.4	584.0	749.4

(a) Excludes persons aged 20-24 attending school. (b) Aged 15 and over. (c) Persons who had left a job in the last twelve months were only asked whether they had looked for work since that job. (d) Persons who had a job but, up to the end of the survey week, had been away from work without pay for four weeks or longer and had not been actively looking for work.

TABLE 16. PERSONS NOT IN THE LABOUR FORCE WHO WANTED TO WORK BUT WERE NOT ACTIVELY LOOKING FOR WORK AND WERE AVAILABLE TO START WORK WITHIN FOUR WEEKS : WHETHER LOOKED FOR WORK IN THE LAST TWELVE MONTHS(a) AND INTENTION TO LOOK FOR WORK IN THE NEXT TWELVE MONTHS, SEPTEMBER 1986 (' 000)

Whether looked for work in the last twelve months(a)	Intention to look for work in the next twelve months					Total
	Intended to look	Might look	Did not intend to look	Did not know	Not asked(b)	
MALES						
Had looked for work	27.5	*	*	*	*	36.4
Less than 5 weeks ago	8.6	*	*	*	*	10.0
5 and less than 8 weeks ago	7.9	*	*	*	*	9.9
8 and less than 13 weeks ago	4.6	*	*	*	*	6.4
13 to 52 weeks ago	6.4	*	*	*	*	10.2
Had not looked for work	43.1	17.6	33.8	4.0	4.0	102.5
Total	70.6	21.3	37.1	5.0	4.9	138.9
FEMALES						
Had looked for work	73.0	16.4	11.1	*	*	105.9
Less than 5 weeks ago	23.2	*	*	*	*	29.2
5 and less than 8 weeks ago	23.1	} 7.1 {	*	*	*	29.4
8 and less than 13 weeks ago	11.6		*	*	*	19.0
13 to 52 weeks ago	15.1	6.0	5.5	*	*	28.4
Had not looked for work	144.8	88.6	182.0	19.4	12.6	447.3
Total	217.7	105.0	193.1	21.7	15.6	553.2
PERSONS						
Had looked for work	100.5	20.1	14.4	*	4.0	142.3
Less than 5 weeks ago	31.8	*	*	*	*	39.1
5 and less than 8 weeks ago	31.0	4.4	} 4.8 {	*	*	39.2
8 and less than 13 weeks ago	16.2	4.3		*	*	25.4
13 to 52 weeks ago	21.5	7.6	7.0	*	*	38.5
Had not looked for work	187.9	106.2	215.8	23.4	16.5	549.8
Total	288.4	126.3	230.2	26.7	20.5	692.1

(a) Persons who had left a job in the last twelve months were only asked whether they had looked for work since that job. (b) Comprises persons who had a job to go to and persons who had a job but, up to the end of the survey week, had been away from work without pay for four weeks or longer and had not been actively looking for work.

TABLE 17. PERSONS NOT IN THE LABOUR FORCE WHO WANTED TO WORK BUT WERE NOT ACTIVELY LOOKING FOR WORK AND WERE AVAILABLE TO START WORK WITHIN FOUR WEEKS : TIME SINCE LAST JOB AND INTENTION TO LOOK FOR WORK IN THE NEXT TWELVE MONTHS, SEPTEMBER 1986 (' 000)

Time since last job	Intention to look for work in the next twelve months					Total
	Intended to look	Might look	Did not intend to look	Did not know	Not asked(a)	
MALES						
Had had a job	45.5	14.6	27.4	*	4.3	95.5
Under 12 months	28.3	4.5	*	*	*	40.3
Under 6 months	16.5	*	*	*	*	24.0
6 and under 12 months	11.8	*	*	*	*	16.4
1 and under 3 years	9.8	} 5.4 {	7.6	*	*	22.3
3 and under 5 years	4.0		5.7	*	*	12.1
5 and under 10 years	*	} 4.6 {	6.3	*	*	12.0
10 and under 20 years	*		*	*	*	7.3
20 years or more	*	*	*	*	*	*
Had never had a job	25.1	6.8	9.7	*	*	43.5
Total	70.6	21.3	37.1	5.0	4.9	138.9
FEMALES						
Had had a job	183.1	94.0	177.2	20.5	14.9	489.7
Under 12 months	59.7	16.0	19.5	4.0	12.7	111.9
Under 6 months	33.2	6.2	9.4	*	11.9	62.1
6 and under 12 months	26.6	9.8	10.1	*	*	49.8
1 and under 3 years	36.0	17.1	29.7	} 6.1 {	*	86.1
3 and under 5 years	24.5	13.6	31.5		*	*
5 and under 10 years	36.2	19.5	46.6	4.3	*	107.2
10 and under 20 years	22.4	19.1	35.5	5.0	*	82.6
20 years or more	4.3	8.7	14.5	*	*	28.6
Had never had a job	34.6	11.0	15.9	*	*	63.5
Total	217.7	105.0	193.1	21.7	15.6	553.2
PERSONS						
Had had a job	228.6	108.6	204.6	24.1	19.2	585.2
Under 12 months	88.0	20.5	22.9	4.3	16.6	152.2
Under 6 months	49.6	8.0	10.9	*	15.8	86.1
6 and under 12 months	38.4	12.5	12.0	*	*	66.2
1 and under 3 years	45.8	20.4	37.2	} 7.6 {	*	108.4
3 and under 5 years	28.4	15.6	37.2		*	*
5 and under 10 years	38.5	22.4	52.9	4.9	*	119.2
10 and under 20 years	23.1	20.9	39.2	6.1	*	90.0
20 years or more	4.7	8.8	15.2	*	*	30.1
Had never had a job	59.8	17.7	25.6	*	*	106.9
Total	288.4	126.3	230.2	26.7	20.5	692.1

(a) Comprises persons who had a job to go to and persons who had a job but, up to the end of the survey week, had been away from work without pay for four weeks or longer and had not been actively looking for work.

TABLE 18. PERSONS NOT IN THE LABOUR FORCE WHO WERE DISCOURAGED JOBSEEKERS: WHETHER LOOKED FOR WORK IN THE LAST TWELVE MONTHS(a), TIME SINCE LAST JOB AND INTENTION TO LOOK FOR WORK IN THE NEXT TWELVE MONTHS, SEPTEMBER 1986 ('000)

	<i>Intention to look for work in the next twelve months</i>				<i>Total</i>
	<i>Intended to look</i>	<i>Might look</i>	<i>Did not intend to look</i>	<i>Did not know</i>	
<i>Whether looked for work in the last twelve months(a)—</i>					
Had looked for work	21.1	*	*	*	27.1
Less than 5 weeks ago	8.7	*	*	*	9.6
5 and less than 8 weeks ago	6.5	*	*	*	6.9
8 and less than 13 weeks ago	*	*	*	*	4.2
13 to 52 weeks ago	*	*	*	*	6.4
Had not looked for work	18.1	12.3	28.6	4.4	63.4
<i>Time since last job—</i>					
Had had a job	33.8	14.5	28.8	4.7	81.9
Under 12 months	9.8	*	*	*	12.9
Under 6 months	5.5	*	*	*	6.2
6 and under 12 months	4.3	*	*	*	6.8
1 and under 3 years	6.8	*	*	*	12.1
3 and under 5 years	5.6	*	6.0	*	14.3
5 and under 10 years	6.2	4.1	9.2	*	20.9
10 and under 20 years	5.4	5.0	5.8	*	14.4
20 years or more	5.4	*	*	*	7.3
Had never had a job	5.4	*	*	*	8.6
Total	39.2	15.8	30.4	5.0	90.5

(a) Persons who had left a job in the last twelve months were only asked whether they had looked for work since that job.

TABLE 19. PERSONS NOT IN THE LABOUR FORCE WHO WANTED TO WORK BUT WERE NOT ACTIVELY LOOKING FOR WORK AND WERE NOT AVAILABLE TO START WORK WITHIN FOUR WEEKS: REASON NOT AVAILABLE TO START WORK WITHIN FOUR WEEKS, INTENTION TO LOOK FOR WORK IN THE NEXT TWELVE MONTHS AND TYPE OF WORK PREFERRED, SEPTEMBER 1986 ('000)

<i>Reason not available to start work within four weeks</i>	<i>Intention to look for work in the next twelve months</i>					<i>Type of work preferred</i>			<i>Total</i>
	<i>Intended to look</i>	<i>Might look</i>	<i>Did not intend to look</i>	<i>Did not know</i>	<i>Not asked(a)</i>	<i>Full-time</i>	<i>Part-time preference</i>	<i>No preference</i>	
Personal reasons	59.9	29.0	52.9	5.5	5.4	66.0	75.0	11.7	152.7
Own ill health, physical disability, pregnancy	19.2	16.5	32.9	*	4.8	31.1	38.2	7.5	76.8
Studying	37.2	10.3	15.9	*	*	33.5	28.3	*	65.4
At school	27.5	9.1	14.5	*	*	27.0	23.6	*	52.8
Other educational institution	9.7	*	*	*	*	6.5	4.7	*	12.5
Moved house/holidays	*	*	4.1	*	*	*	8.5	*	10.5
Family reasons	14.6	19.2	41.6	4.0	8.5	11.0	70.5	6.5	88.0
Ill health of other than self	*	*	*	*	*	*	7.4	*	9.4
Unable to find suitable childcare	*	*	*	*	*	*	7.7	*	9.9
Children too young/preferred to look after children	10.3	13.6	34.3	*	8.1	8.1	55.3	5.2	68.6
Other reasons	6.3	*	9.8	*	*	5.4	15.2	*	22.0
Total	80.9	51.8	104.3	11.2	14.5	82.5	160.7	19.5	262.7
Males	28.7	12.1	21.7	*	*	39.9	21.5	6.9	68.3
Females	52.2	39.6	82.6	8.0	12.0	42.5	139.2	12.6	194.4

(a) Persons who had a job but, up to the end of the survey week, had been away from work without pay for four weeks or longer and had not been actively looking for work.

TABLE 20. PERSONS NOT IN THE LABOUR FORCE WHO WANTED TO WORK BUT WERE NOT ACTIVELY LOOKING FOR WORK AND WERE NOT AVAILABLE TO START WORK WITHIN FOUR WEEKS: REASON NOT AVAILABLE TO START WORK WITHIN FOUR WEEKS AND AGE, SEPTEMBER 1986 ('000)

<i>Reason not available to start work within four weeks</i>	<i>Age group</i>								<i>Total</i>
	<i>15-19</i>	<i>20-24</i>	<i>25-34</i>	<i>35-44</i>	<i>45-54</i>	<i>55-59</i>	<i>60-64</i>	<i>65 and over</i>	
Personal reasons	59.4	15.8	24.0	21.3	13.9	8.7	5.9	*	152.7
Own ill health, physical disability, pregnancy	5.7	8.3	20.1	16.4	12.0	7.8	6.5	*	76.8
Studying	53.4	7.2	4.7	*	*	*	*	*	65.4
At school	48.5	*	*	*	*	*	*	*	52.8
Other educational institution	4.9	4.4	*	*	*	*	*	*	12.5
Moved house/holidays	*	*	4.0	*	*	*	*	*	10.5
Family reasons	*	9.7	52.2	18.5	4.8	*	*	*	88.0
Ill health of other than self	*	*	4.2	*	*	*	*	*	9.4
Unable to find suitable childcare	*	*	7.1	*	*	*	*	*	9.9
Children too young/preferred to look after children	*	7.8	42.9	15.1	*	*	*	*	68.6
Other reasons	*	*	6.2	5.4	4.8	*	*	*	22.0
Total	61.4	27.5	82.4	45.2	21.8	11.5	6.9	5.9	262.7
Males	27.8	6.8	7.5	8.6	6.5	5.1	4.0	*	68.3
Females	33.6	20.6	75.0	36.7	15.3	6.4	6.8	*	194.4

ADDITIONAL TABLES

The following is a list of additional tables of results from the survey which are available to users on request. These tables show a selection of estimates on an Australia-wide basis. Tables disaggregated by State/Territory and other tables may also be available. Most tables are dissected by sex.

Persons not in the labour force—

Labour force status—

- A1 Age
- A2 Family status
- A3 Main activity
- A4 Time since last job

Age—

- A5 Occupation in last job and time since last job
- A6 Reason for ceasing last job and occupation in last job
- A7 Main activity and family status
- A8 Whether wanted to work
- A9 Whether looked for work in the last twelve months and main activity

Family status—

- A10 Main activity
- A11 Time since last job
- A12 Reason for ceasing last job

Persons who wanted to work—

Age—

- A13 Reason for ceasing last job and status of worker in last job
- A14 Occupation in last job and full-time or part-time status in last job
- A15 Intention to look for work in the next twelve months and type of work preferred
- A16 Type of work preferred and main activity

Persons with marginal attachment to the labour force—

Main reason for not actively looking for work—

- A17 Age
- A18 Family status
- A19 Time since last job

Main activity—

- A20 Intention to look for work in the next twelve months
- A21 Family status

Persons who wanted to work but were not actively looking for work and were available to start work within four weeks—

All reasons for not actively looking for work—

- A22 Age
 - A23 Family status
- Main reason for not actively looking for work and age—
- A24 Family status
 - A25 Time since last job

TECHNICAL NOTE

Estimation procedure

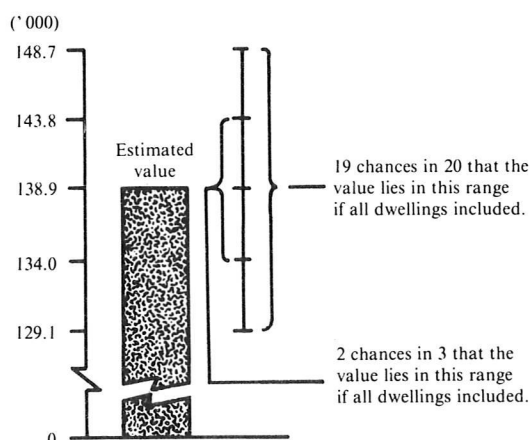
The estimates are derived from the population survey by use of a ratio estimation procedure, which ensures that the estimates conform to an independently estimated distribution of the population for each capital city and remainder of State by age and sex, rather than to the corresponding distribution within the sample itself.

Reliability of the estimates

2. Since the estimates in this publication are based on information obtained from occupants of a sample of dwellings, they are subject to sampling variability: that is, they may differ from the figures that would have been produced if all dwellings had been included in the survey. One measure of the likely difference is given by the *standard error*, which indicates the extent to which an estimate might have varied by chance because only a sample of dwellings was included. There are about two chances in three that a sample estimate will differ by less than one standard error from the figure that would have been obtained if all dwellings had been included, and about nineteen chances in twenty that the difference will be less than two standard errors. Another measure of the likely difference is the *relative standard error*, which is obtained by expressing the standard error as a percentage of the estimate.

3. Space does not allow for the separate indication of the standard errors of all estimates in this publication. A table of standard errors for general application is given on the following page. Since they are averages based on calculations for a limited number of past surveys over a wide range of labour force characteristics these figures will not give a precise measure of the standard error of a particular estimate but they will provide an indication of its magnitude.

4. An example of the calculation and the use of standard errors in relation to estimates of persons is as follows. Table 15 shows the estimated number of males in Australia who were not in the labour force and who wanted to work but were not actively looking for work and were available to start work within four weeks was 138,900. Since this estimate is between 100,000 and 200,000 the standard error for Australia will be between 4,400 and 5,800 in the standard error table and can be approximated as 4,900 (rounded to the nearest 100). Therefore, there are about two chances in three that the value that would have been produced if all dwellings had been included in the survey will fall in the range 134,000 to 143,800 and about nineteen chances in twenty that the value will fall within the range 129,100 to 148,700. This example is illustrated in the following diagram.



5. As can be seen from the standard error table, *the smaller the estimate the higher is the relative standard error*. Very small estimates are thus subject to such high standard errors (relative to the size of the estimate) as to detract seriously from their value for most reasonable uses. In the tables in this publication, estimates less than the lowest levels shown in the standard error table have not been published. Although figures for these small components can in some cases be derived by subtraction, they should not be regarded as reliable.

6. Proportions and percentages formed from the ratio of two estimates are also subject to sampling errors. The size of the error depends on the accuracy of both the numerator and the denominator. The formula for the relative standard error (RSE) of a proportion is given below:

$$RSE (x/y) = \sqrt{[RSE (x)]^2 - [RSE (y)]^2}$$

7. Considering the example from paragraph 4 above, of the 138,900 males who wanted to work but were not actively looking for work and were available to start work within four weeks only 8,500 or 6.1 per cent were aged between 20 and 24. The standard error of 8,500 is approximately 1,400 so the relative standard error is 16.7 per cent. The relative standard error for 138,900 is 3.6 per cent. Applying the above formula, the relative standard error of the proportion is $\sqrt{(16.7)^2 - (3.6)^2}$ or 16.3 per cent, giving a standard error for the proportion (6.1 per cent) of 1.0 percentage points. Therefore, there are about two chances in three that the proportion of males who were aged between 20 and 24 and who wanted to work but were not actively looking for work and were available to start work within four weeks was between 5.1 per cent and 7.1 per cent and nineteen chances in twenty the proportion was within the range 4.1 per cent to 8.1 per cent.

8. Published figures may also be used to estimate the difference between two survey estimates (of numbers or percentages). Such a figure is itself an estimate and is therefore subject to sampling error. The sampling error of the difference between two estimates depends on their standard errors and the relationship (correlation) between them. An approximate standard error (SE) of the difference between two estimates (x-y) may be calculated by the following formula:

$$SE (x-y) = \sqrt{[SE (x)]^2 + [SE (y)]^2}$$

While this formula will only be exact for differences between separate and uncorrelated characteristics or sub-populations it is expected to provide a good approximation for all differences likely to be of interest in this publication.

9. The imprecision due to sampling variability, which is measured by the standard error, should not be confused with inaccuracies that may occur because of imperfections in reporting by interviewers and respondents and errors made in the coding and processing of data. Inaccuracies of this kind are referred to as the *non-sampling error*, and they may occur in any enumeration, whether it be a full count or only a sample.

STANDARD ERRORS OF ESTIMATES

Size of estimate	N.S.W.	Vic.	Qld	S.A.	W.A.	Tas.	N.T.	A.C.T.	Australia	
									—number—	Relative standard error (per cent)
1,500						360		350		
1,800						390		380		
2,000						400		390		
2,500				560	580	450		430		
3,000			740	610	630	480	700	460		
3,500			790	650	680	510	740	480		
4,000			840	690	720	540	780	510	970	24.3
4,500	1,100	1,100	890	730	750	570	810	530	1,050	23.3
5,000	1,150	1,200	940	760	790	600	850	550	1,100	22.0
6,000	1,250	1,300	1,000	820	850	640	910	590	1,200	20.0
10,000	1,600	1,600	1,300	1,000	1,050	780	1,100	700	1,550	15.5
20,000	2,150	2,150	1,750	1,350	1,400	1,000	1,450	870	2,150	10.8
50,000	3,200	3,150	2,500	1,900	1,950	1,400	2,000	1,150	3,250	6.5
100,000	4,250	4,100	3,250	2,400	2,550	1,700		1,350	4,400	4.4
200,000	5,600	5,300	4,150	3,050	3,200	2,100			5,800	2.9
300,000	6,500	6,100	4,800	3,450	3,650				6,800	2.3
500,000	7,900	7,200	5,600	4,050	4,250				8,300	1.7
1,000,000	10,100	8,900	7,000						10,700	1.1
2,000,000	12,800	11,000							13,600	0.7
5,000,000									18,300	0.4

